



*These assessments are my expert findings from reputable sources including (but not exclusively) catalogues, comparison to authenticated products, careful consideration of construction and types of materials used. Where necessary I have also consulted additional specialists and makers.*

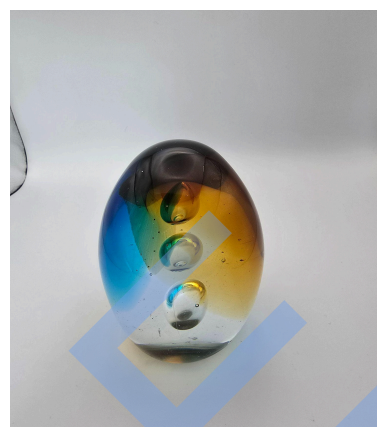
<b><u>For appraisal</u></b>	
<p><u>Blue and pink pastel vase</u> H=12cm, d=11cm</p> <p>Made by Bath Aqua Glass - modern glassworks in Bath.</p> <p>Signature visible which reads BATH 2022, followed by another mark which is either a partially occluded digit 1 or 2, indicating the year it was made.</p> <p>Base, style and surface bubbles consistent with this maker.</p> <p>Condition: Excellent</p> <p>RP = £60 (£130 new)</p>	
<p><u>Green sun vase</u> H=12.5cm, L=12.5cm, W = 4.5cm</p> <p>Aurinkopullo (Sun Bottle) designed by Helena Tynell (1918-2016). First designed in 1964 and produced until 1974. It was made for Finnish Riihimäen Lasi glassworks in four sizes and 13 colours. This is the smallest size in dark green and matches with catalogue entries in terms of dimensions, base, neck etc.</p> <p>Condition: Excellent</p> <p>RP = £260</p>	

Blue, clear and amber egg paperweight  
H=19cm d=5cm (base)

Prominent texture lines from making processes and significant number of tiny bubbles within the clear glass not consistent with Murano. No signature. Not in Murano catalogues of known makers in the 1960s. Can conclude it is not from Murano, and thus priced as a decorative piece of glass only.

Condition: chip to base

RP = £40



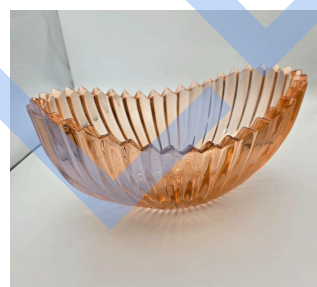
Pink mantle glass

H=11cm, L=24cm, W=14cm

Made by Sowerby in the 1930s, moulded pink glass,

Condition: Small chip to base

RP: £30



Blown glass blue egg on stand  
H=11cm (inc. stand), D=6.5cm

Not from Murano. Although at first glance looks similar to the screenshot provided via WhatsApp, there are significant differences which raise questions of authenticity on closer inspection.

There's less aventurine (incorporated gold leaf) than I'd expect to see from an authentic Murano item. The large bubbles are inconsistent with Murano quality.

The stand provides further strong evidence that this is not a Murano piece. The egg appears to be stuck on with putty and the inner base of the stand is very poor quality with evidence of manufacture visible within the metal. A Murano-made egg would usually have either a glass base, or a separate ornamental stand.

No signature.

*(NB: Silver purity untested)*

Condition: Very good (Egg excellent, stand slightly tarnished and misshapen)



## Lovers statue

H=26cm, d=10cm (base)

Not from Murano. The brilliance of the glass is not as expected from Murano, and this piece lacks the detail and definition in the arms and head. No signature.

In reference to the links below, this statue matches the product shown in link 1 in terms of size, style and look.

For comparison, link 2 below shows a genuine Murano example (image provided to right for illustration purposes).

- (1) [World of Glass and Gifts](#)
- (2) [Genuine Murano pieces](#)

Condition: Excellent

RP: Similar sold pieces around £35



## Purple Tajima Vase

H=17.5cm d=5cm

As discussed from Japan by Tajima. Not Whitefriars.

Condition: Excellent

RP = £30



Swan clear bowl  
H=30cm, d=18cm

Not Murano. Unsigned.

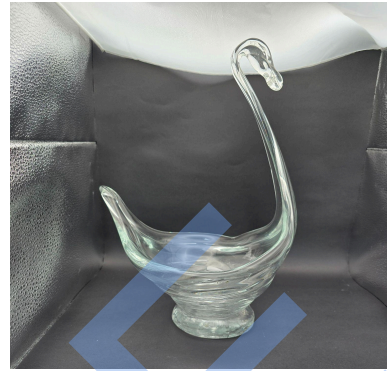
Large quantity of bubbles in the base and neck region. In general a simplistic and heavy piece of glass.

Murano animals feature significantly more elaborate heads with careful shaping and expression in manufacture.

Highly unusual for Murano pieces to be made entirely in clear glass. Could not find a comparable model in any Murano catalogue.

Condition: Excellent

RP = £20



End report

---